



# *Torvi City*

**EVA BOOTS  
With liner**



- **Lightweight**
- **Waterproof**
- **Comfortable**
- **Made of hypoallergenic EVA material**
- **Anatomically shaped shoe**
- **Anti-slip outsole**

Modern, comfortable, multifunctional EVA boots Torvi City are great for spring and autumn weather. Light and waterproof, they sit on the foot and keep their shape perfectly, do not "shrink" with time. Anatomical shoe provides natural movement during active leisure and work, creating maximum comfort. This footwear is ideal for any pastime, at the same time it will be suitable both in the city, and in the wild.

Nontrivial design is suitable for both men and women. In such shoes, any problems along the way are overcome easily and comfortably

The consumer audience of Torvi City shoes consists of men and women (unisex) who prefer comfortable shoes for outdoor activities, physical work or long walking. This model is also recommended for teenagers 12+ as it has an anatomical structure of the shoe.

Torvi City boots are applicable both for wearing in an urban environment, and for going into the nature.

- **For everyday wear in an urban environment**
- **For outdoor activities**
- **For fishing and hunting**
- **For household chores during the demi-season**
- **For movement in bad weather**
- **For industrial work at temperatures down to -10°C**





**Material - solid EVA**

**Color - black, gray**

**Use temperature - down to -10 ° C**

**Average weight of 1 boot with an insert - 700 gr.**

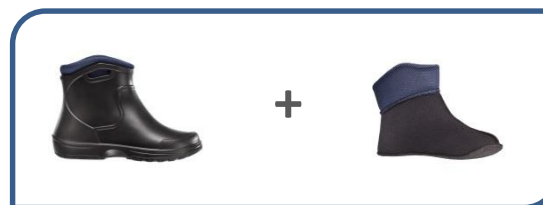
**Average height - 40 cm**

**Size range – 37, 38, 39, 40, 41, 42, 43, 44, 45, 46, 47**

**Group box - 5 pairs**

## Package options

**EVA solid boots + liner**



**EVA solid boots**



# Distinctive advantages

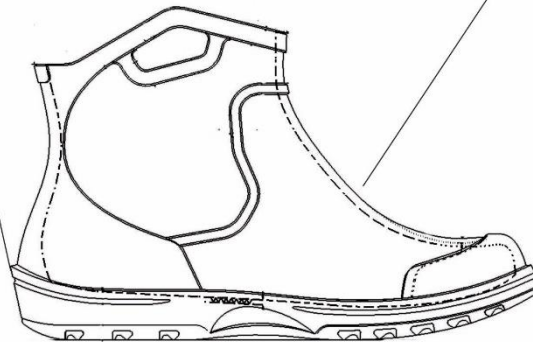
Due to the anatomical structure of the shoes, the foot moves as naturally as possible, maintaining the natural balance and receiving the necessary support.



Due to the anatomical structure of the pads, the foot moves as naturally as possible, maintaining the natural balance and receiving the necessary support.

Stabilization of the heel zone

Shock absorption during movement



support of the center  
of the foot

prevents rotation of  
the foot inwards

Lightweight removable liner made from modern polyester foam with hypo-allergenic fabric. Together, EVA boots Torvi City and liner provide reliable protection against cold in the offseason, when ice or porridge of snow and water is under your feet.

Polyester foam



Hypoallergenic fabric





## Men's series



Torvi Универсал  
(T +15-5°C)



Torvi T- 25°C



Torvi T- 45° C



Torvi T-60°C



Torvi Liman



Torvi Perekat

## Fishing circle



Fishing circle D 150 with accessories

## Hats



## Women's series

Torvi Onega T- 40°C



**Office and production address:  
Dzerzhinsky, Moscow Region**

**Lesnaya str., 44**

**Multichannel phone: 8 800 700-93-33**

**Website: [www.torvi.ru](http://www.torvi.ru)**

